



Hold Goods, Move World

Powder Coating Surface Treatment Customized Steel Pallet

Steel pallets are primarily used in industrial environments for their strength, fire resistance, and longevity.



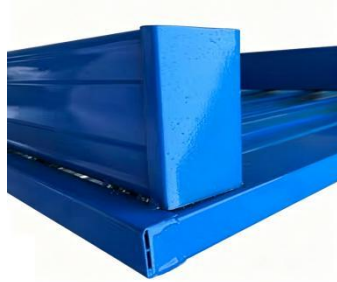
Technical Specifications

Model No.:

HM-SP001

Surface Treatment: Powder coating
 Loading Capacity: 1000 kg
 Loaded in 1x40'HQ: 486 sets
 Exterior Dim.(LxWxH): 1200x1000x150 mm

Product Design	Ext. Dim.LxWxH	Loading Capacity	Loaded in 1x40'HQ
Model No.	mm	kg	set
HM-SP002	1160x1160x150	1000	215
HM-SP003	1100x1100x130	1000	486
HM-SP004	1200x1200x140	1000	351
HM-SP005	1500x1300x150	2000	198
HM-SP006	1650x1400x150	7000	172

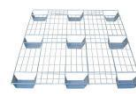


Powder Coating Surface Finish
Corrosion-resistant for long-term industrial use

Heavy-Duty Steel Structure
Supports repeated handling and static warehouse loads

Forklift Entry
Compatible with forklift and pallet jack operations

Multi-Beam Support
Distributes loads more evenly across the deck



Dalian, Liaoning
Province, China



<https://hmlrack.com>
sales@hmlrack.com



WhatsApp/WeChat
008615040608276

